

# THRUSTERS

## STR 100 - 500 - xE

A **PETTER'S MARINE HYDRAULICS** thruster is made for operating in demanding environments and tough conditions, providing **EXCELLENT** performance and high **RELIABILITY** in a **COST EFFICIENT** way. In the STR design, the motor is oriented orthogonally to the thruster tunnel, with a 90° transmission, making the thruster especially suited for mounting under the main propeller shaft when mounted with an intermediate shaft.

The **STR100-500** thruster is available with both electric and hydraulic drive, and is delivered with all necessary equipment, tailored to the customer's needs. For hydraulic drive, please see datasheet for STR100-500-xH. For electric drive thrusters, we deliver frequency converters and an electronic control systems.

The control systems are prepared for integration with thruster control systems such as **PETTER'S MARINE HYDRAULICS' MOTOR PITCH THRUSTER CONTROL (MPTC)** and dynamic positioning systems such as the **KEEP POSITION (KP)** system. Please see the MPTC and KP brochures or visit **PETTER'S MARINE HYDRAULICS' home page [WWW.PMH.NO](http://www.pmh.no)** for more information.

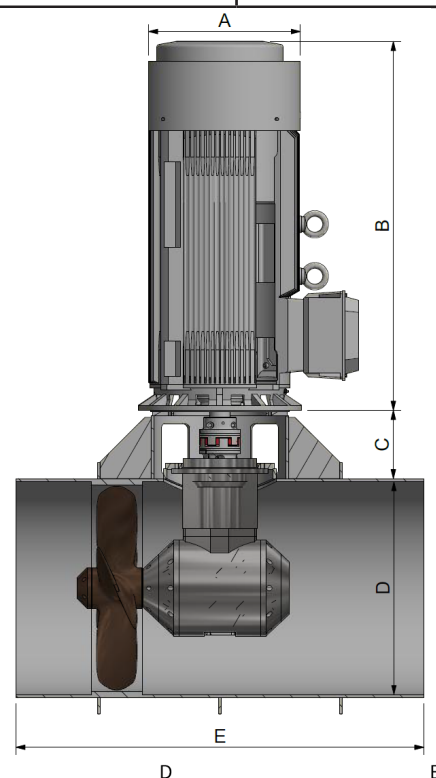
### ORDER INFORMATION

The thrusters are available in aluminum (alloy 5083), steel and fiberglass, and with both hydraulic and electric drive. The overall length of the tunnel is adjusted to the individual hull on request. Upon order, please state material thickness of hull, as the material thickness of the thruster tunnel has to be dimensioned accordingly.



### TECHNICAL SPECIFICATIONS

Propeller:	4 blades, fixed pitch
Voltage:	3x 400 / 690 V
Motor IP-rating:	IP56
External cooling:	Yes
Internal heating in standby:	Yes
Max Power:	500 hp / 370kW
Max RPM:	550 (propeller)
Thrust	> 4000 kg



Part name:

Example: **STR 100-500-AH**

- Device type  
Ø100 cm, 500 hp
- Drive  
Hydraulic (H), Electric (E)
- Material  
Aluminum (A), Steel (S),  
Glass fiber (G)

A	B	C	D	E
660 mm	1810 mm	355 mm	1045 mm	2000 mm

# THRUSTERS

## STR 100 - 500 - xH

A **PETTER'S MARINE HYDRAULICS** thruster is made for operating in demanding environments and tough conditions, providing **EXCELLENT** performance and high **RELIABILITY** in a **COST EFFICIENT** way. In the STR design, the motor is oriented orthogonally to the thruster tunnel, with a 90° transmission, making the thruster especially suited for mounting under the main propeller shaft when mounted with an intermediate shaft.

The **STR100-500** thruster is available with both electric and hydraulic drive, and is delivered with all necessary equipment, tailored to the customer's needs. For hydraulic drive, please see datasheet for STR100-500-xE. For electric drive thrusters, we deliver frequency converters and an electronic control systems.

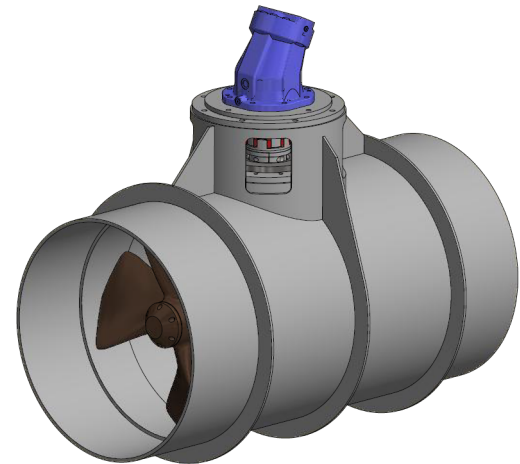
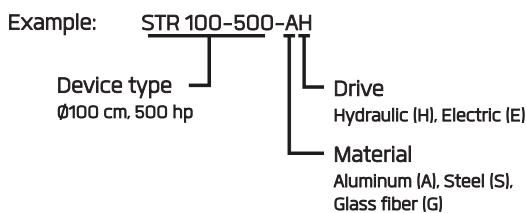
The control systems are prepared for integration with thruster control systems such as **PETTER'S MARINE HYDRAULICS' MOTOR PITCH THRUSTER CONTROL (MPTC)** and dynamic positioning systems such as the **KEEP POSITION (KP)** system. Please see the MPTC and KP brochures or visit **PETTER'S MARINE HYDRAULICS' home page [WWW.PMH.NO](http://www.pmh.no)** for more information.

### ORDER INFORMATION

The thrusters are available in aluminum (alloy 5083), steel and fiberglass, and with both hydraulic and electric drive. The overall length of the tunnel is adjusted to the individual hull on request. Upon order, please state material thickness of hull, as the material thickness of the thruster tunnel has to be dimensioned accordingly.

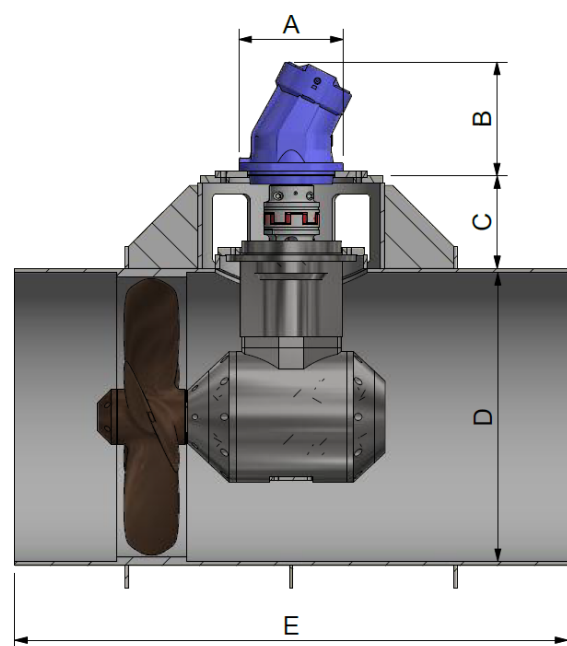
Oil flow and pressure may vary with the mounted motors and the hydraulic system.

Part name:



### TECHNICAL SPECIFICATIONS

Hydraulic interface:	
A.B:	SAE 6000 PSI 11/2"
Drain:	M33x2
Propeller:	4 blades, fixed pitch
Max oil flow:	755 l/min
Max oil pressure:	300 bar
Max power:	500 hp / 370kw
Max RPM:	550 (propeller)
Thrust:	> 4000 kg



A	B	C	D	E
375 mm	395 mm	355 mm	1045 mm	2000 mm