

MPTC⁺



Finally – an MPTC upgrade that gives you all the benefits of the MPTC – combined with Keep Position. In our MPTC+ you'll have Motor, Pitch, Thruster Control and dynamic positioning in one panel.

With PMH's dynamic positioning system, a vessel will be able to operate in more demanding environments and tougher conditions, providing EXCELLENT performance and high RELIABILITY in a COST EFFICIENT way.

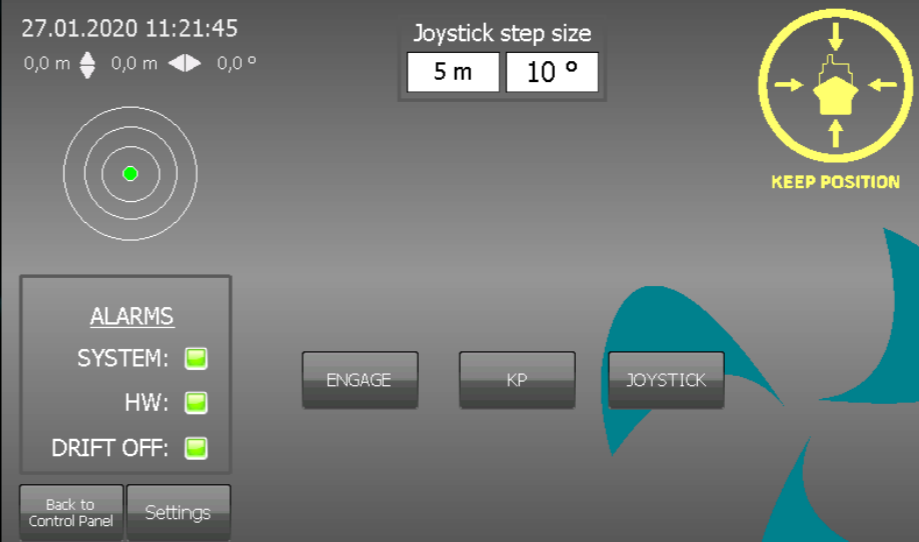
KEEP POSITION

The "KEEP POSITION" (KP) dynamic positioning system is one of PMH's innovative technologies in positioning and maneuvering solutions. The KEEP POSITION system is specified and designed around the requirements presented by our customers, which daily are involved in many different types of operations. One of the many advantages of this system is its flexibility, where PMH presents three different options with a variety of functionality, at the most competitive price in the market.

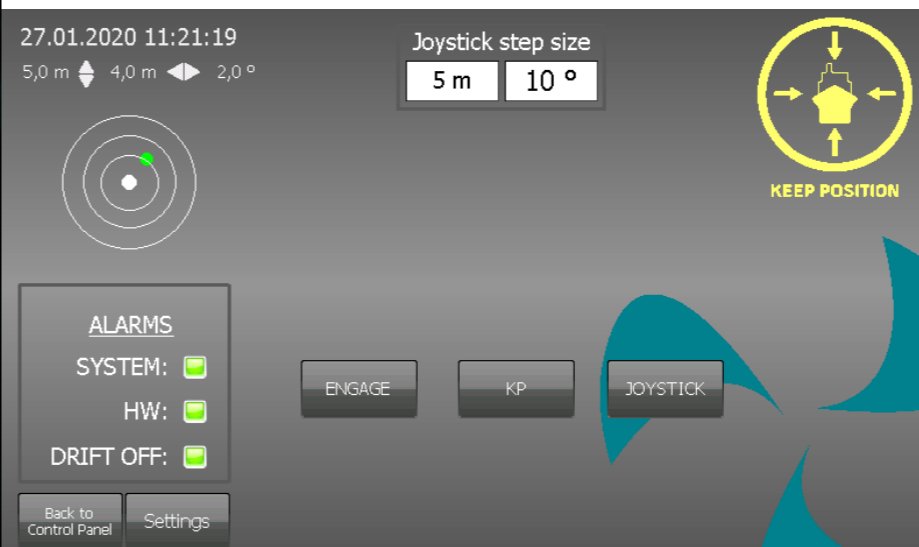
For every KP-vessel, and before the system is commissioned, PMH analyses the vessel according to environmental requirements and available maneuvering power. Based on these results, the tuning of the vessel becomes easier and quicker, and if necessary; recommendations can be made at an early stage, and actions are taken to increase maneuverability. The KP system is tailor-made to each vessel and optimized for the vessel's area of operation.

KP AND JOYSTICK-MODE

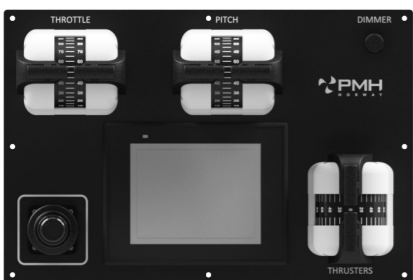
The MPTC+ system is a dynamic positioning system with the most basic functions, for vessels without special requirements for extra features. KP-mode keeps your vessel in the desired position and heading, where the joystick lets you step your position in prefixed steps. Using Joystick-mode makes docking and maneuvering both quick and easy, as the KP system directs all propulsion and maneuvering equipment to move the vessel in the desired direction.



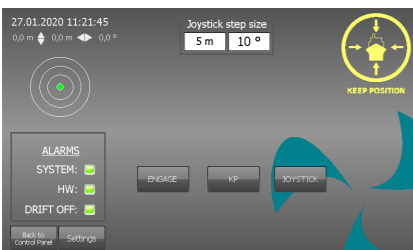
The interface is self-explanatory with buttons for engaging the KP, activating it, and a button for activating control by joystick. The interface provides the operator with feedback indicating any errors on the system, whether it is a system alarm, hardware alarm, or drift-off alarm. No functionality is left behind.



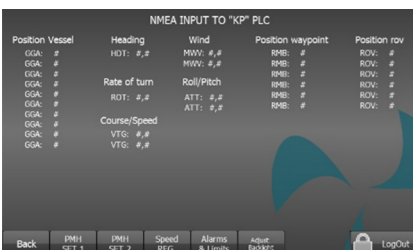
Simple but strong visualization is the key to safe operation. 'Keep position*' proves that advanced functionality does not require lots of info in the primary view of the operator interface. Dynamic positioning is activated by a button, and the DP in progress may be supervised by the indicator on the top left side, showing the deviation from desired position.



The control station has a clear and obvious design and leaves no room for hesitation when quick and well-considered actions are necessary.



The operator interface is a simple way to access functionality where advanced calculations are within reach by pressing one button. The interface makes it easy to keep track of the KP performance.



'MPTC+' includes all the functionality from KP, at a lower cost, yet more powerful and more flexible than ever. All in all this gives more value to the customer as the system is easier to install, while the need for maintenance and service is greatly reduced.

CONTROL SYSTEMS

Various control systems are often asked for, easing tasks onboard. The vessel crew should be safe. We have solutions to ensure safe control of all equipment above and below deck. Our control systems are built to industry standards and can be maritime approved. Everyone on deck is kept safe and efficient with PMH equipment on board.

CUSTOMIZING

We can customize everything within control systems for all sorts of vessels. We develop safe, robust solutions for control of all equipment on the boat. Our systems make remote support simple, as they can be remotely linked. Data logging with optional data export is standard.

DYNAMIC POSITIONING

Keep Position was developed by us to keep vessels in an absolute position based on satellite-based navigation systems, stay positioned relative to an ROV or other objects in motion, or moving in a given direction. Keep Position is easily integrated with our maneuvering systems, but also with third party systems.

ENVIRONMENTAL IMPACT

The system can make use of a wind sensor, MRU or other environmental sensing equipment to compensate in realtime before any deviation is registered.

UPGRADES

Does your vessel already have PMH's maneuvering system installed onboard you say? Why not upgrade the system to include the basic functions of a KP100, or you can go all the way to a KP300 by a customized software upgrade on your already installed controller.

MPTC+

MPTC+ is the combination of two technologies that make critical operations easier, safer, and more predictable, by allowing access to both systems in one place – and in one panel. All our systems can be customized to your specific needs and applications. Give us a call about your project.



STANDARD MANEUVERING SOLUTIONS

Manufacturer of TYPE APPROVED PRODUCTS:

- STEERING GEARS
- ANCHOR WINCHES



PMH NORWAY AS

web: www.pmh.no

switchboard +47 73 96 26 26

E-mail: post@pmh.no