

# STEERING GEARS

TYPE APPROVED PRODUCT



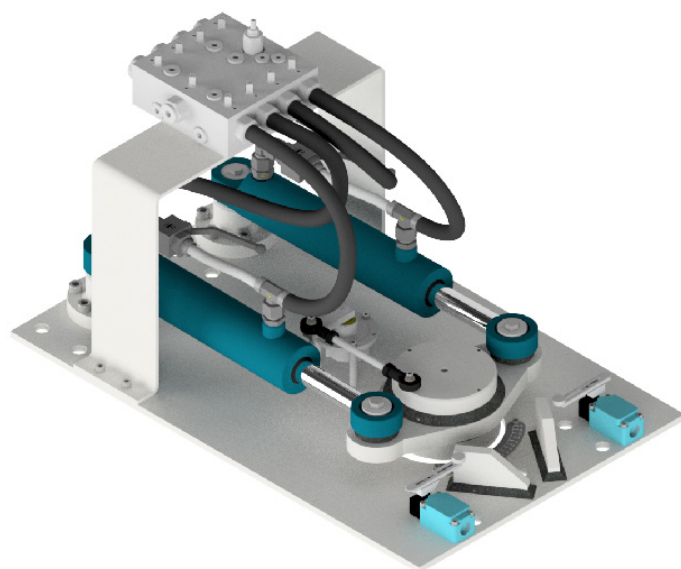
**PETTER'S MARINE HYDRAULICS** has a long tradition of delivering complete steering gears systems of various types and purposes to the fishing, shipping and aquaculture industries. **PETTER'S MARINE HYDRAULICS** has all its standardized steering gears as "off the shelf" products, available on short times of delivery, with an ranges from 5kNm up to 15kNm. **PETTER'S MARINE HYDRAULICS** steering gears are made for operations in demanding environments and tough conditions, providing **EXCELLENT** performance and high **RELIABILITY** in a **COST EFFICIENT** way.

#### PMH SG: Steering Gear

**PETTER'S MARINE HYDRAULICS'** steering gears are hydraulically driven and manufactured in steel. Our steering gears are **DNV GL type approved**, which is required by the Norwegian Maritime Authorities rule "No. 1853 on construction and supervision of smaller cargo ships" §44 section 2.b)".

The steering gears can be delivered to either single or twin engine(s). Steering gears for twin engines are delivered without a mechanical crossbeam, to avoid conflicts with the base of deck equipment such as towing pins and shark jaw.

The steering gears are usually not delivered with an helm pump, but it can be delivered on request.



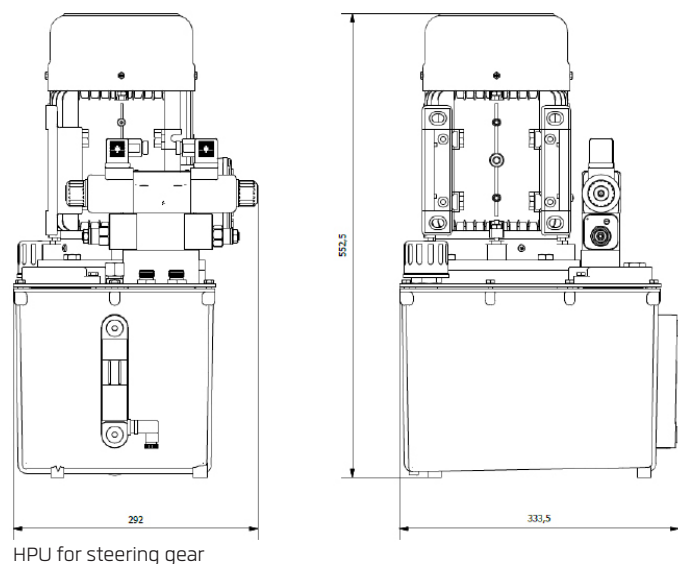
SG-500

#### FEATURES:

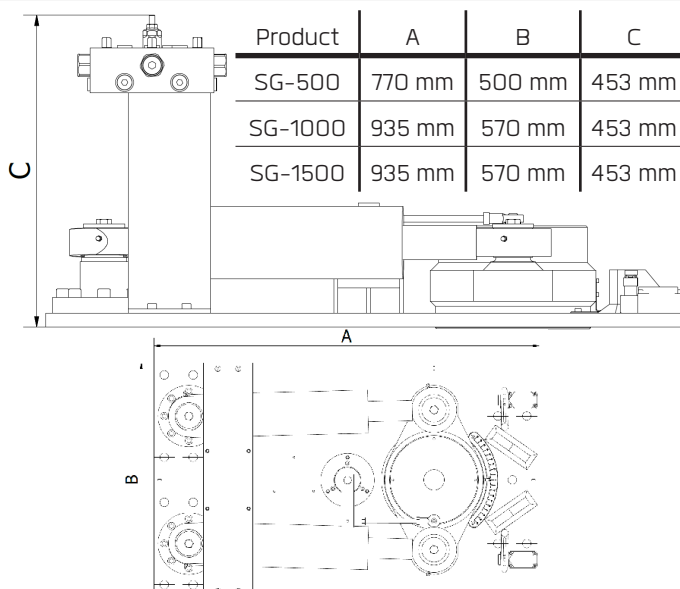
- Reliable
- Easy installation
- Easy maintenance
- 2 Cylinders delivers full torque, and 1 cylinder delivers about half of the max torque
- Compact HPU(s), 1.5kW, 13L tank and capacity of 5 L/min
- 40L tank

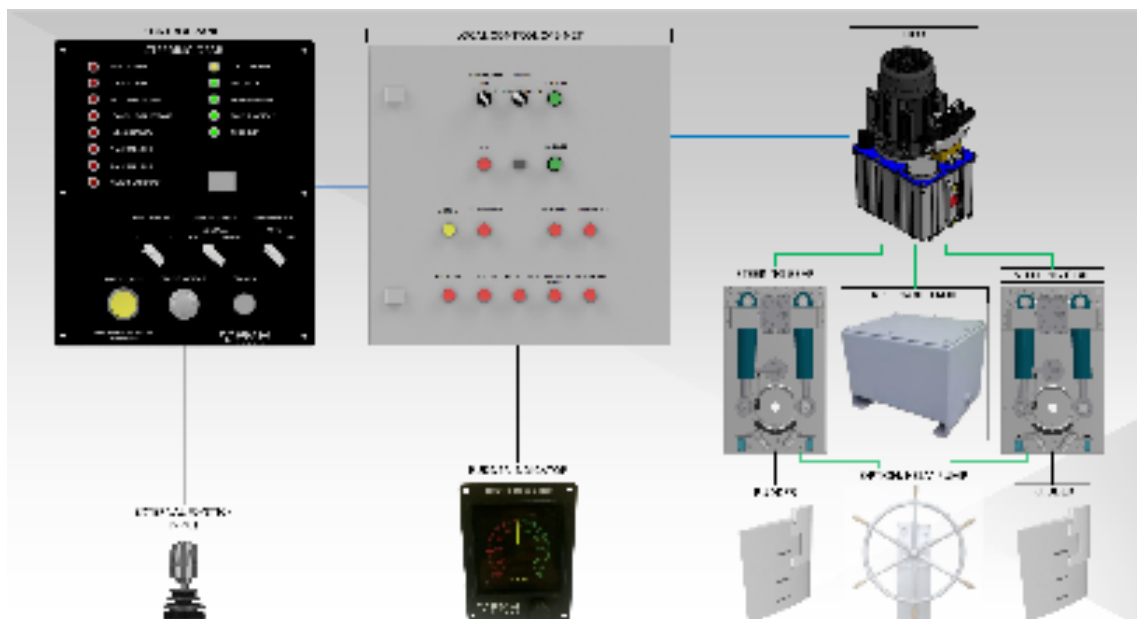
#### TECHNICAL SPECIFICATIONS

	SG-500	SG-1000	SG-1500
Max design pressure	100 Bar	100 Bar	100 Bar
Max working pressure	80 Bar	80 Bar	80 Bar
Max rudder angle	2x35 Deg	2x35 Deg	2x35 Deg
Max design torque	7.14 kNm	13.75 kNm	19.49 kNm
Max MTR	5.71 kNm	11.00 kNm	15.59 kNm
Max working torque	5.71 kNm	11.00 kNm	15.59 kNm
Hard angle 35°-0-35°	@11s	@19s	@27s



HPU for steering gear



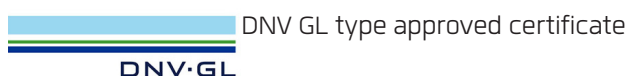


Steering gear control system for twin engines.

### PMH SGC: STEERING GEAR CONTROL SYSTEM

**PETTER'S MARINE HYDRAULICS** delivers a DNV GL type approved control system that can be used on any steering gear model. Steering gear control system is compatible with any auto-pilots. DNV GL type approved electric and electronic parts are used in the system for highest reliability. The system is approved for single and twin engine(s).

#### STANDARDS & CERTIFICATIONS



Norwegian Maritime Authorities rule "No. 1853 on construction and supervision of smaller cargo ships" §44 section 2.b)", requires that the steering gear control system is type approved by a recognized classification societies for boats over a length 15 and up to 24 meters.

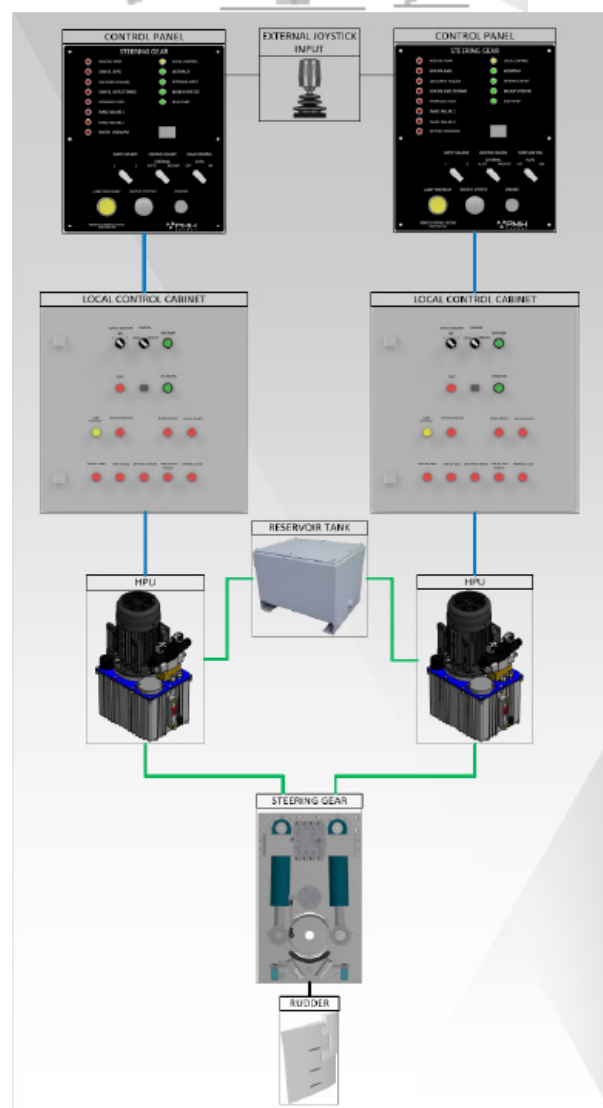
#### LOCAL CONTROL CABINET FEATURES:

- Power Supply: **2x24 VDC, 2x440/400/230 VAC (50/60Hz)**
- Dimensions: **600x600x200mm**
- International Protection Marking: **IP66**

#### BRIDGE CONTROL PANEL FEATURES:

- Monitoring of 8 visual & acoustic alarm 9 (8 for twin engine motors)
- Dimensions: **280x240x120mm**
- Material: **Black anodized aluminium**
- Lamp test/Reset
- Dimmer
- Autopilot input
- External joystick input

**PETTER'S MARINE HYDRAULICS** aims to satisfy our customers by providing reliable products at a reasonable price, together with excellent performance and customer support.



Steering gear control system for twin engines.

For the customer that demands a little bit more, **PETTER'S MARINE HYDRAULICS** offers a support contract that ensures 24/7 technical phone support and on-site support within 24 hours if a breakdown or malfunction should occur. We also offer proactive service contracts for periodic maintenance of all equipment, including software.



# STANDARD MANEUVERING SOLUTIONS

Manufacturer of TYPE APPROVED PRODUCTS:

- STEERING GEARS
- ANCHOR WINCHES



PETTER'S MARINE HYDRAULICS

**web:** [www.pmh.no](http://www.pmh.no)

**switchboard** +47 73 96 26

**E-mail:** [post@pmh.no](mailto:post@pmh.no)