



# COMPACT- HANDLER

Design according to Norwegian  
Maritime Authorities rule No.1853

## SWL 20t



Manufacturer of TYPE APPROVED PRODUCTS:  
- STEERING GEARS  
- ANCHOR WINCHES

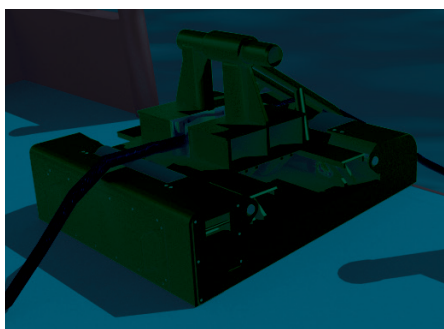
Kan låse både tau og  
kjetting

I henhold til  
ny forskrift (1)

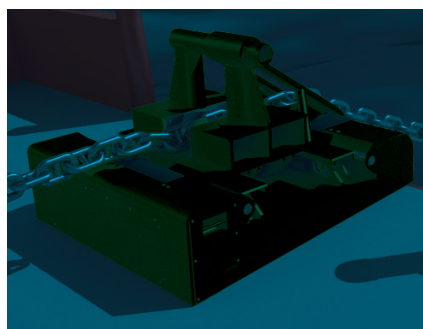


Integrerte  
styrepinner

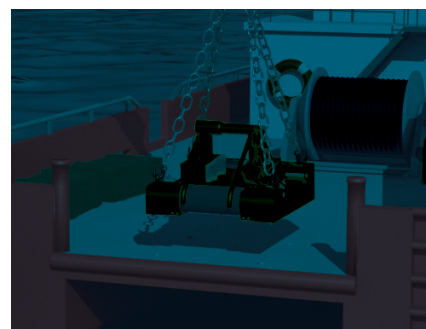
Monteres ved behov



Låsing av tau med en diameter  
opptil  $\varnothing 90\text{mm}$



Låsing av kjetting med en  
lenkebredde opptil 170mm



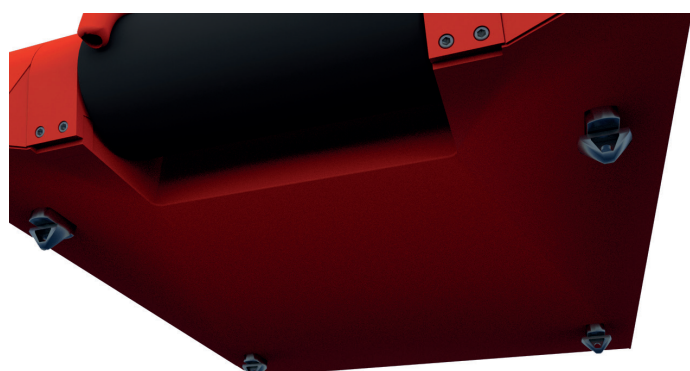
Monteres ved behov på  
eksisterende fartøy

(1) FOR-2014-12-19-1853 Bygging og tilsyn av mindre lasteskip. Gjelder alle nye skip og eksisterende flåte fra 1. januar 2017.

#### TEKNISKE SPESIFIKASJONER

|                       |                    |
|-----------------------|--------------------|
| Vekt inkl. hydraulikk | 1900 kg            |
| L – B – H             | 1800 x 1550 x 1000 |
| Kapasitet             | 20T                |
| Total oljeforbruk     | 10 L/min           |
| Trykk                 | 300 Bar            |





PMH has produced and supplied robust, high quality solutions for maritime vessels for over 50 years.

Our customers know PMH products as stable and robust. Our employees are rich in know-how, solution-oriented, receptive and have a wide range of mechanical and technical skills. Equipment from PMH is supplied to customers within the offshore, personnel transportation, fishing, freight and aquaculture industries.

Our products include maneuvering systems, hydraulics, total concepts, thrusters, capstans, winches and safety equipment.



[www.pmh.no](http://www.pmh.no)

Phone: +47 73 96 26 26

Address: Petter's Marine Hydraulics,

Nik. Haugrønning AS, 7070 Bosberg, NORWAY